

# smacircle™ S1 - QUICK START GUIDE

## ⚠ WARNING:

Please make sure the S1 is off before folding it.

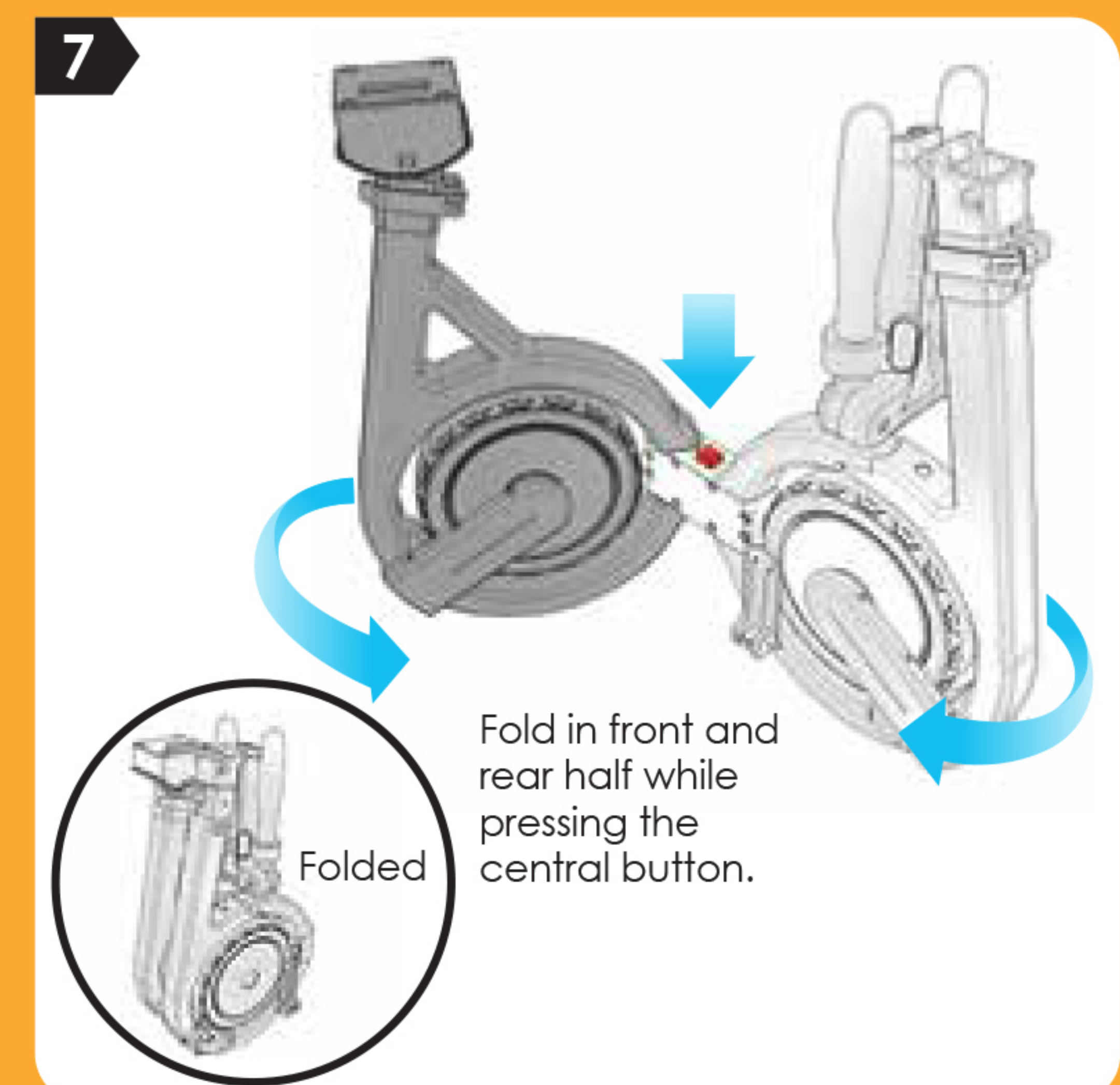
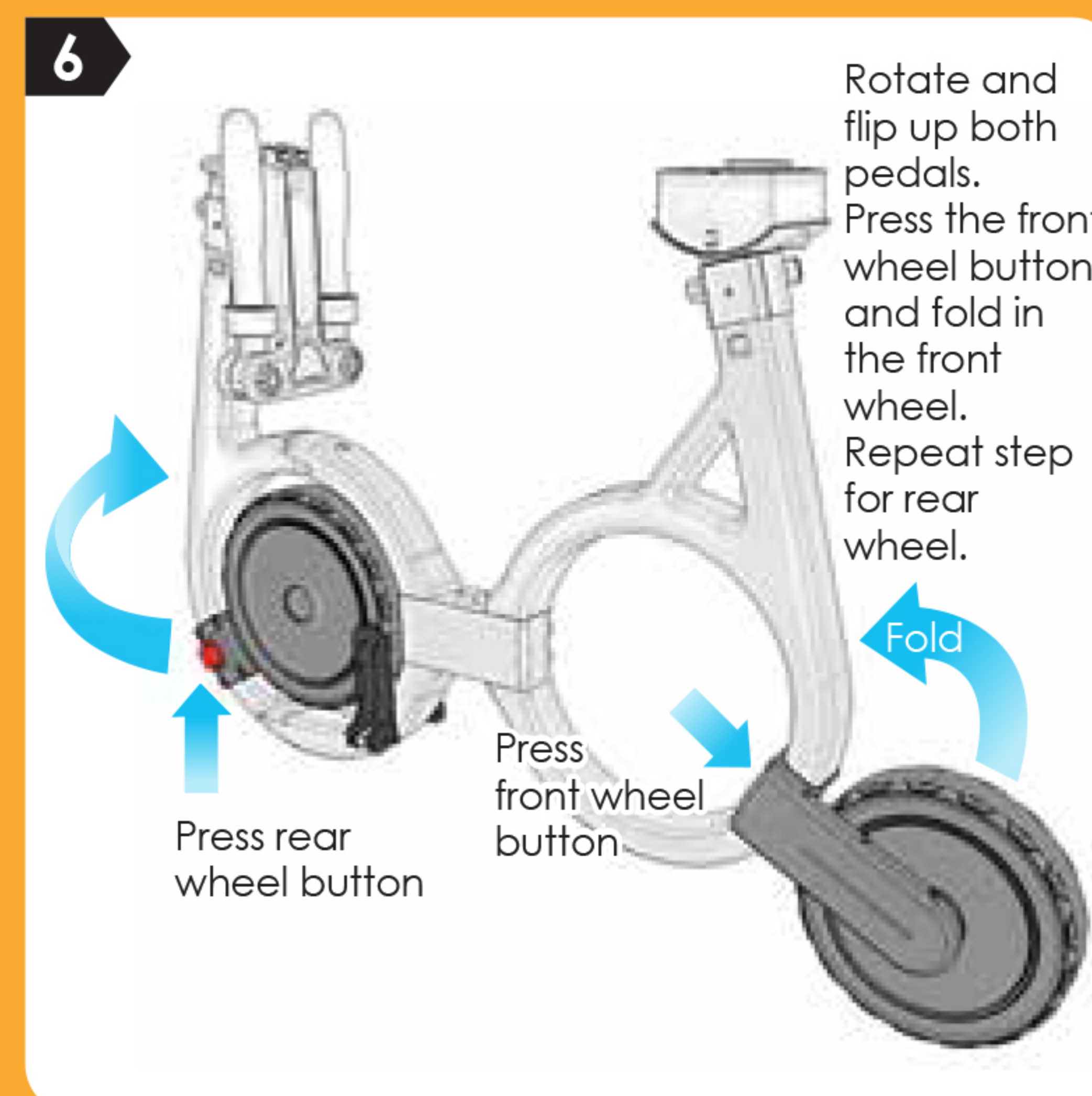
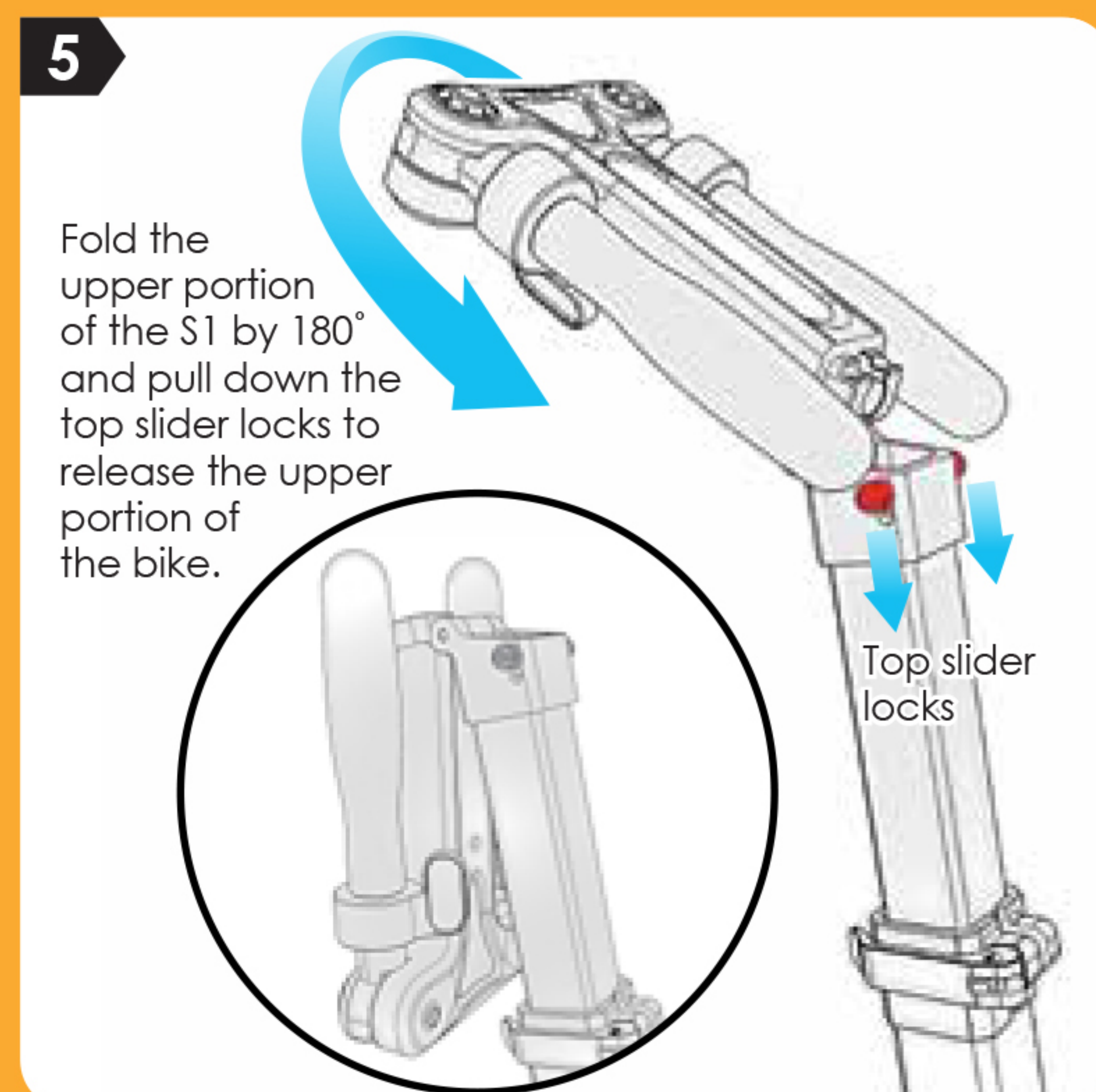
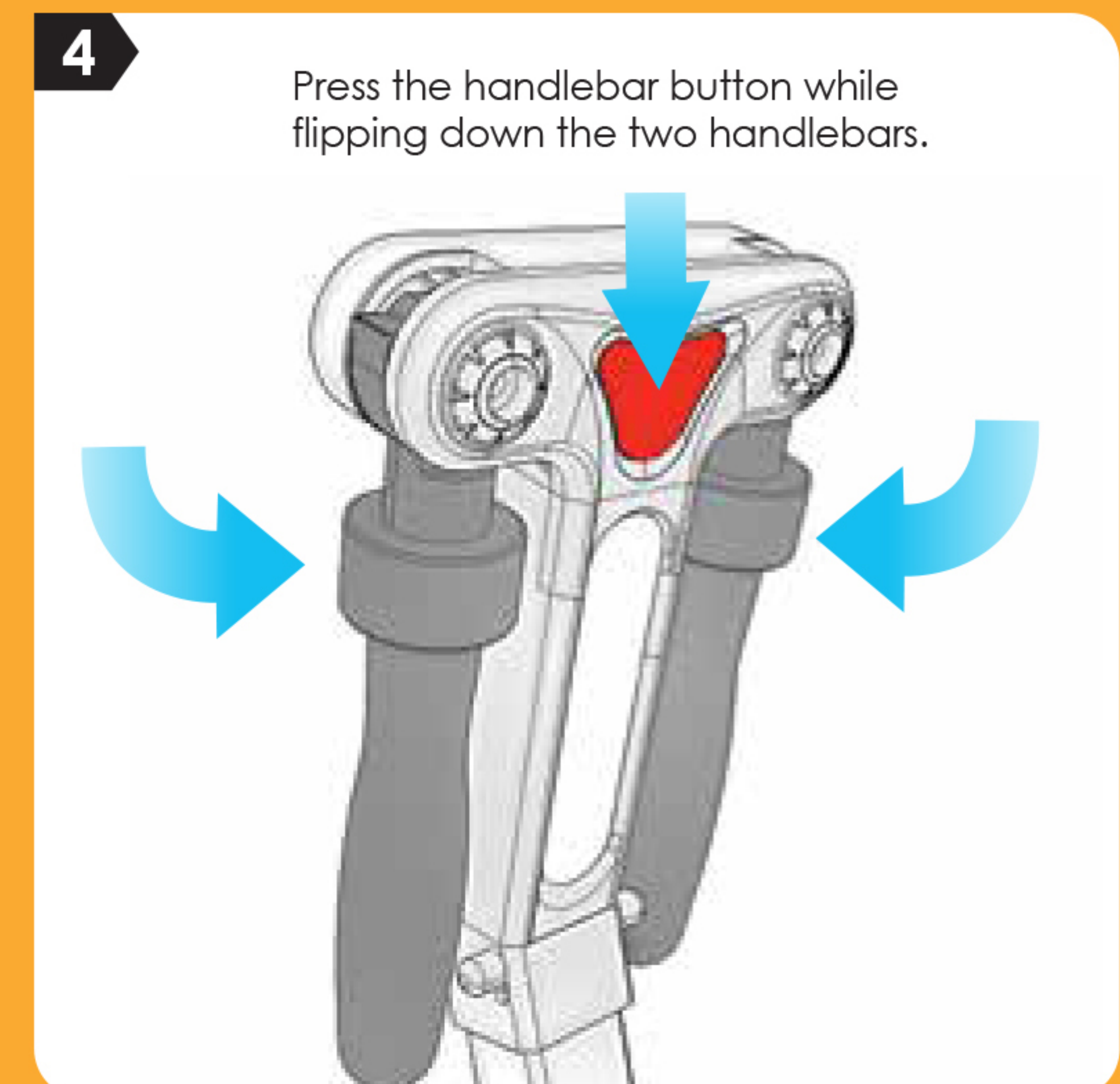
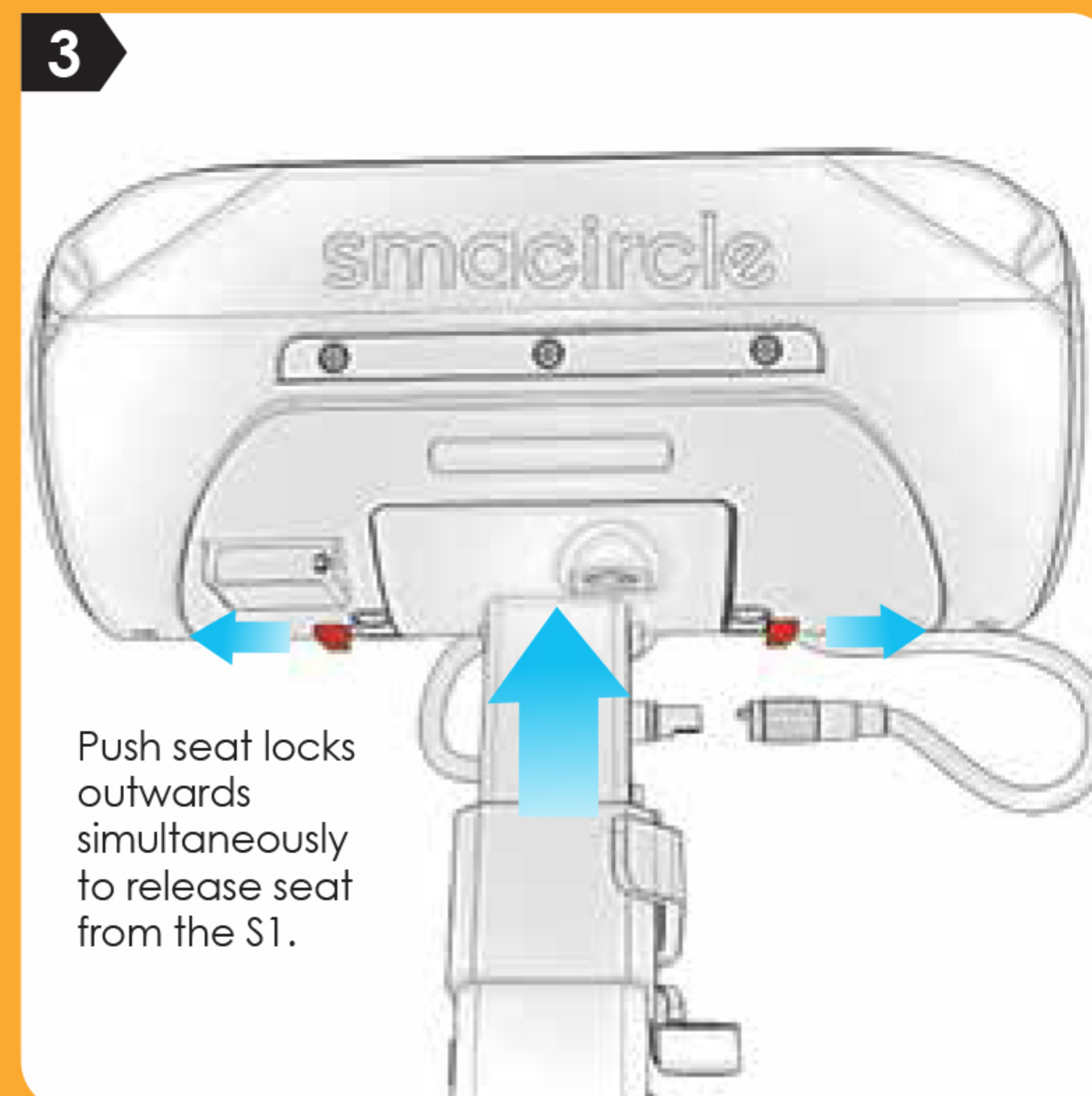
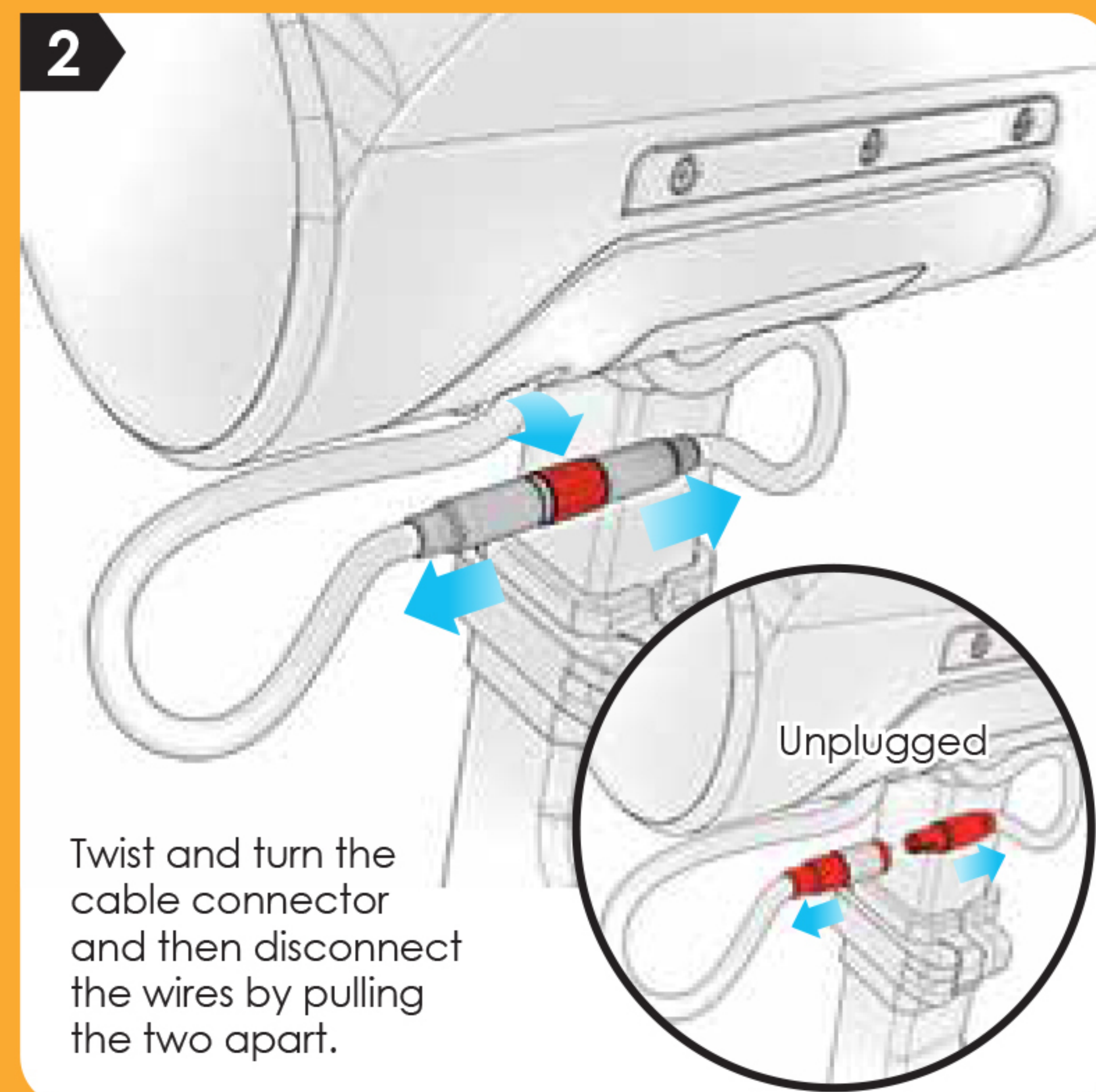
## ⚠ WARNING:

Temperature of motor (rear wheel) will be high after a long ride, please be careful when folding.



Scan to view instruction videos

## FOLDING STEPS





# smacircle™ S1 - QUICK START GUIDE

## ⚠ WARNING:

Whenever you ride your S1 you risk injury or death from loss of control, collisions, and falls. Be sure to read the User Manual and watch the Instructional Videos before riding. Always wear a helmet. Always follow local traffic rules and road regulations.

### NOTE:

1. The S1 is locked by default and will need to be activated and unlocked through the Smacircle APP.
2. For safety concerns, Smacircle S1 is defaulted to be non-zero start-up. This means that the throttle can work only after the motor (rear wheel) is worked by external force.
3. For safety concerns, Smacircle S1 turns off automatically if kept idle for more than 5 minutes.
4. The Smacircle S1 default mode is Normal. See User Manual for additional details.

## APP Updates

Smacircle reserves the right to make changes to the S1, release firmware updates, and update this guide at any time. Please download the Smacircle APP to do the following: activate and unlock your S1, activate your warranty period, follow the rider tutorial and obtain the latest updates and safety instructions.

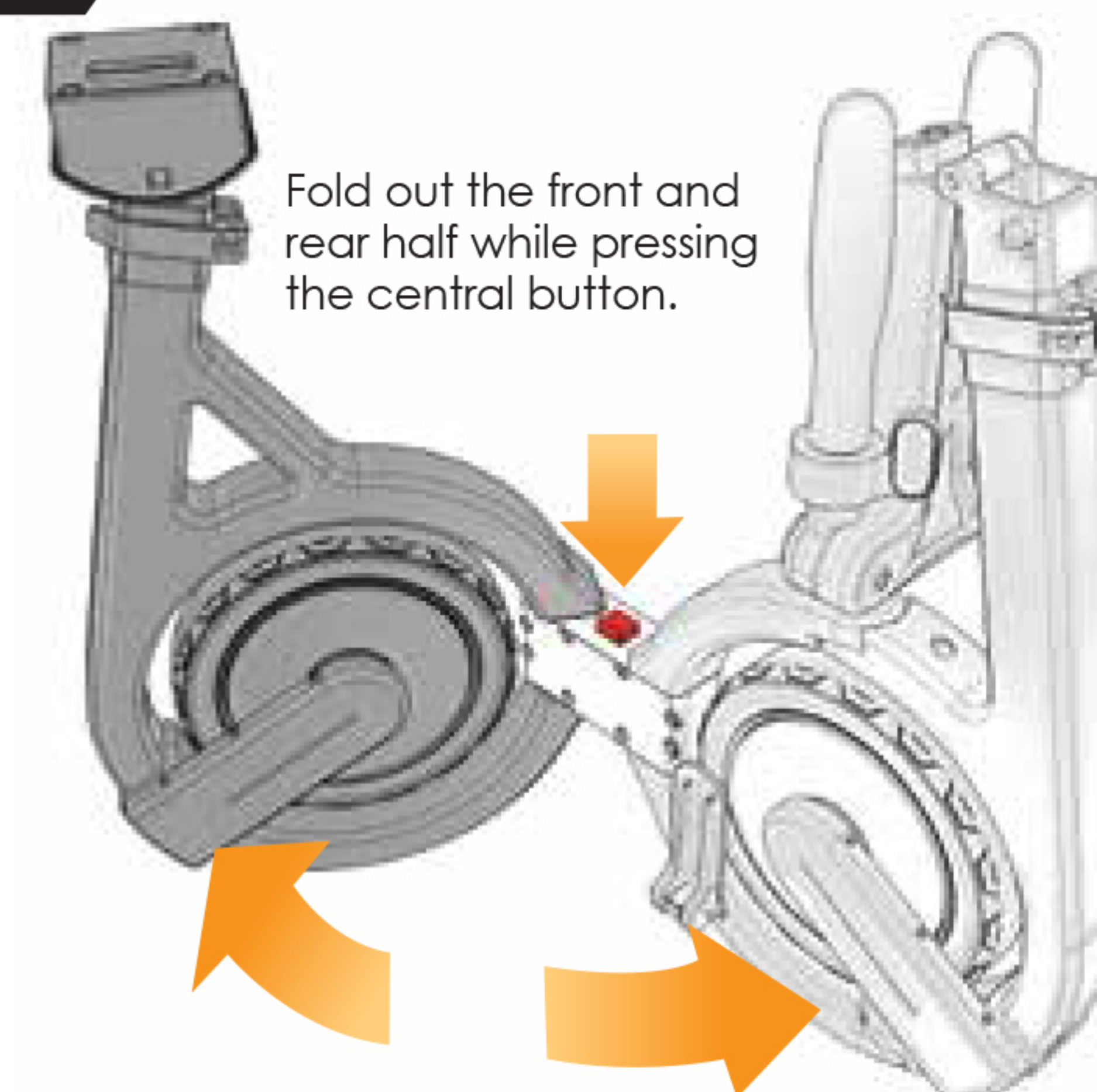


Scan to download the App

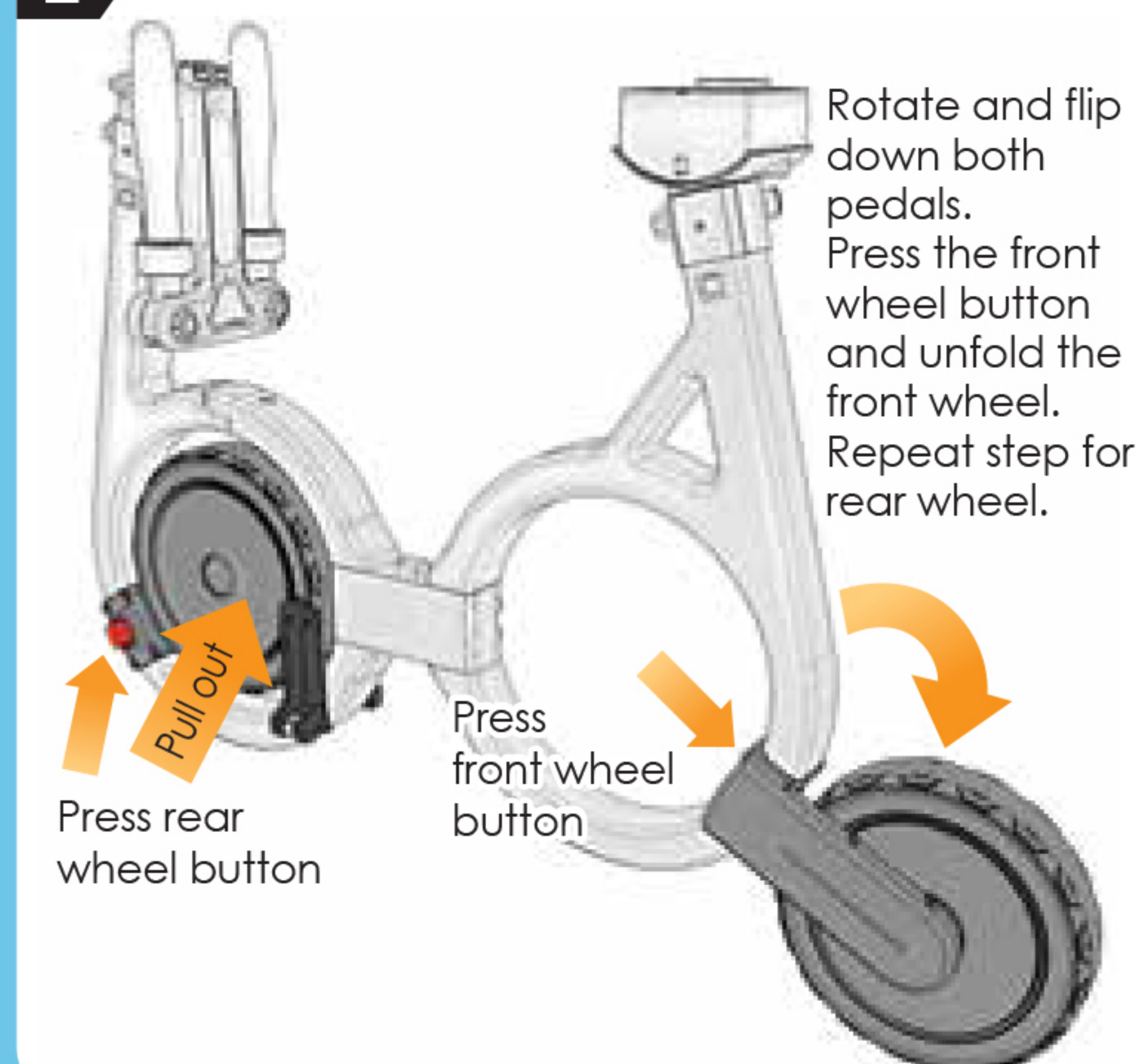
Serial No.

## UNFOLDING STEPS

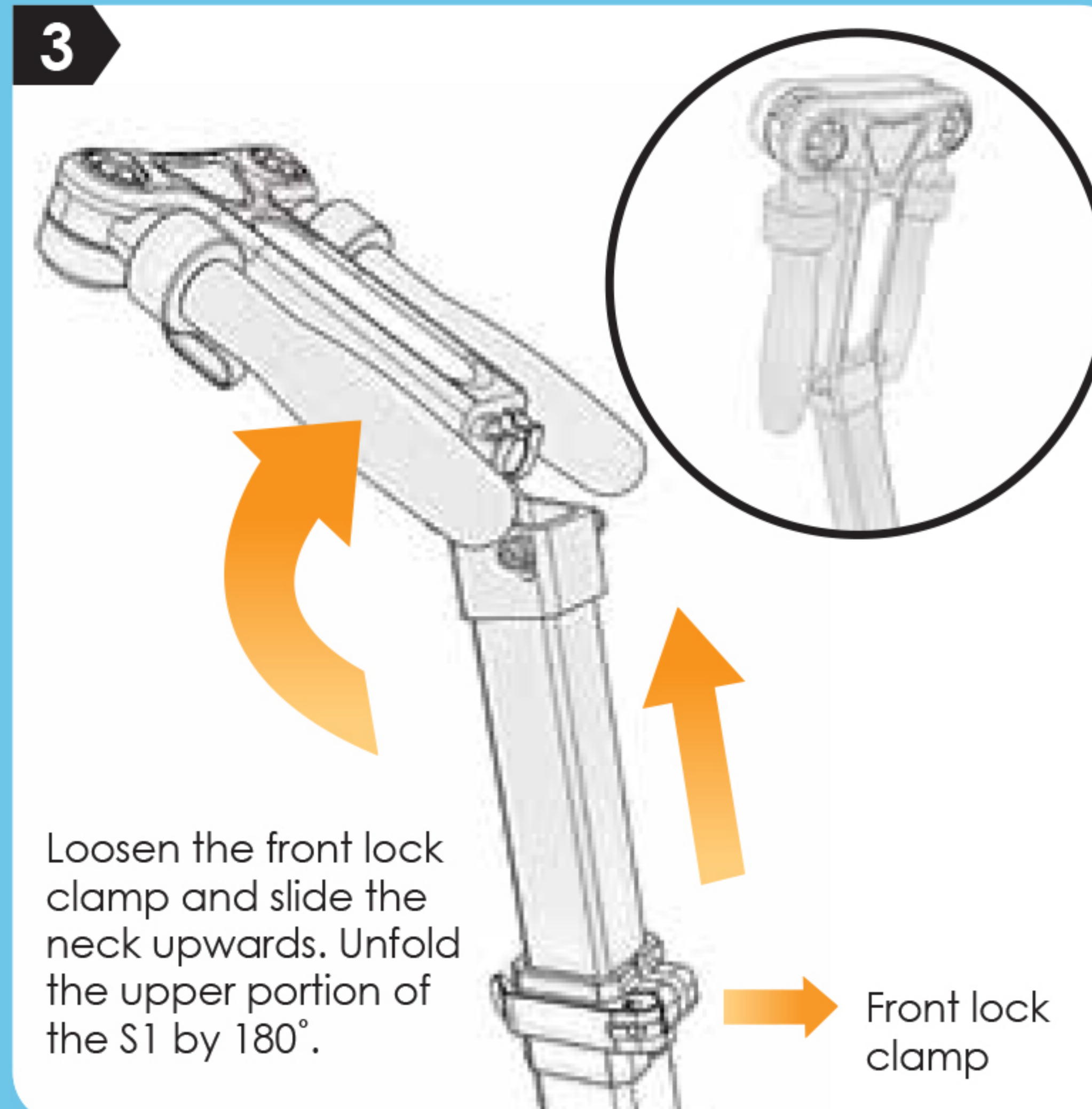
1



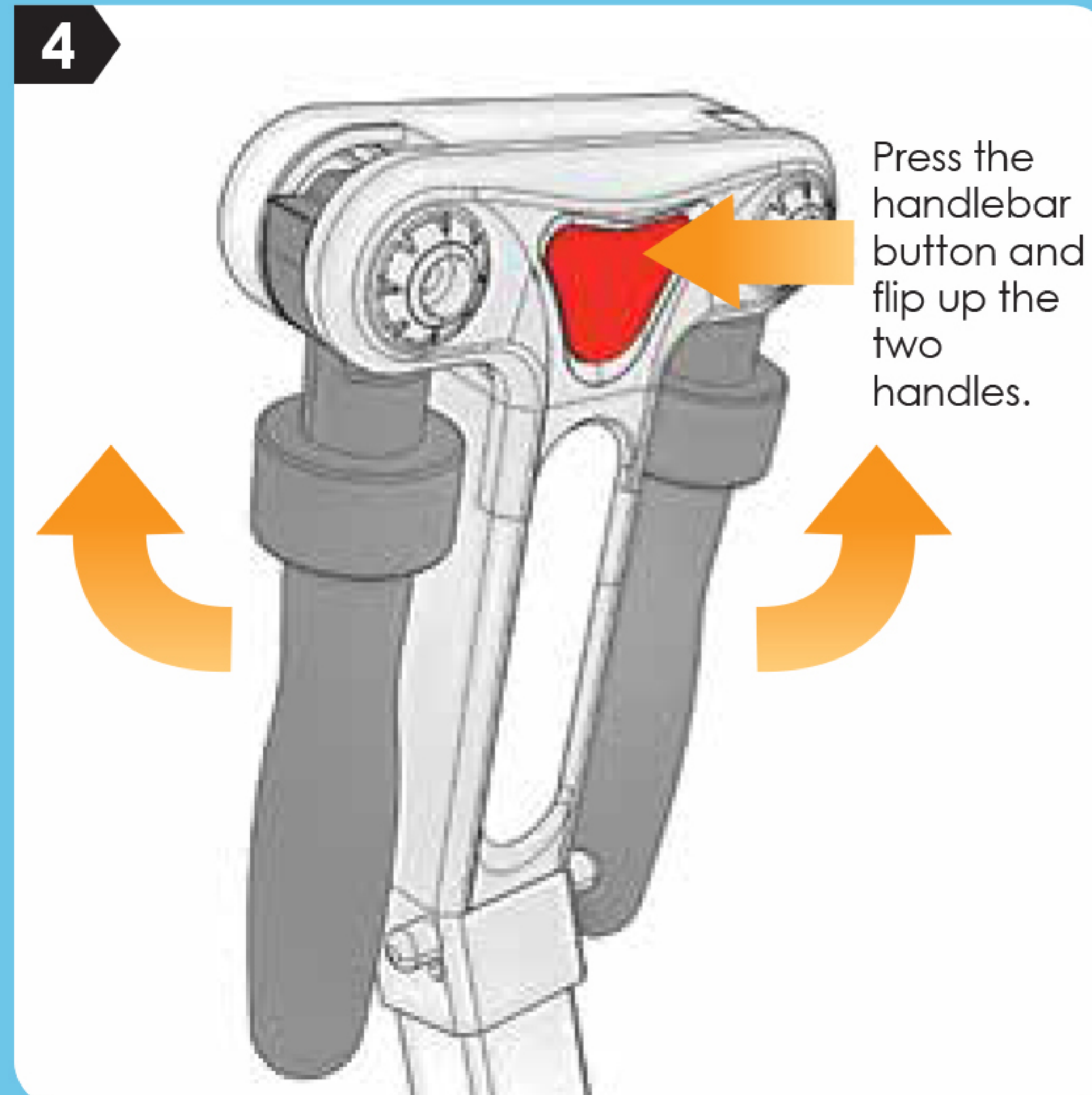
2



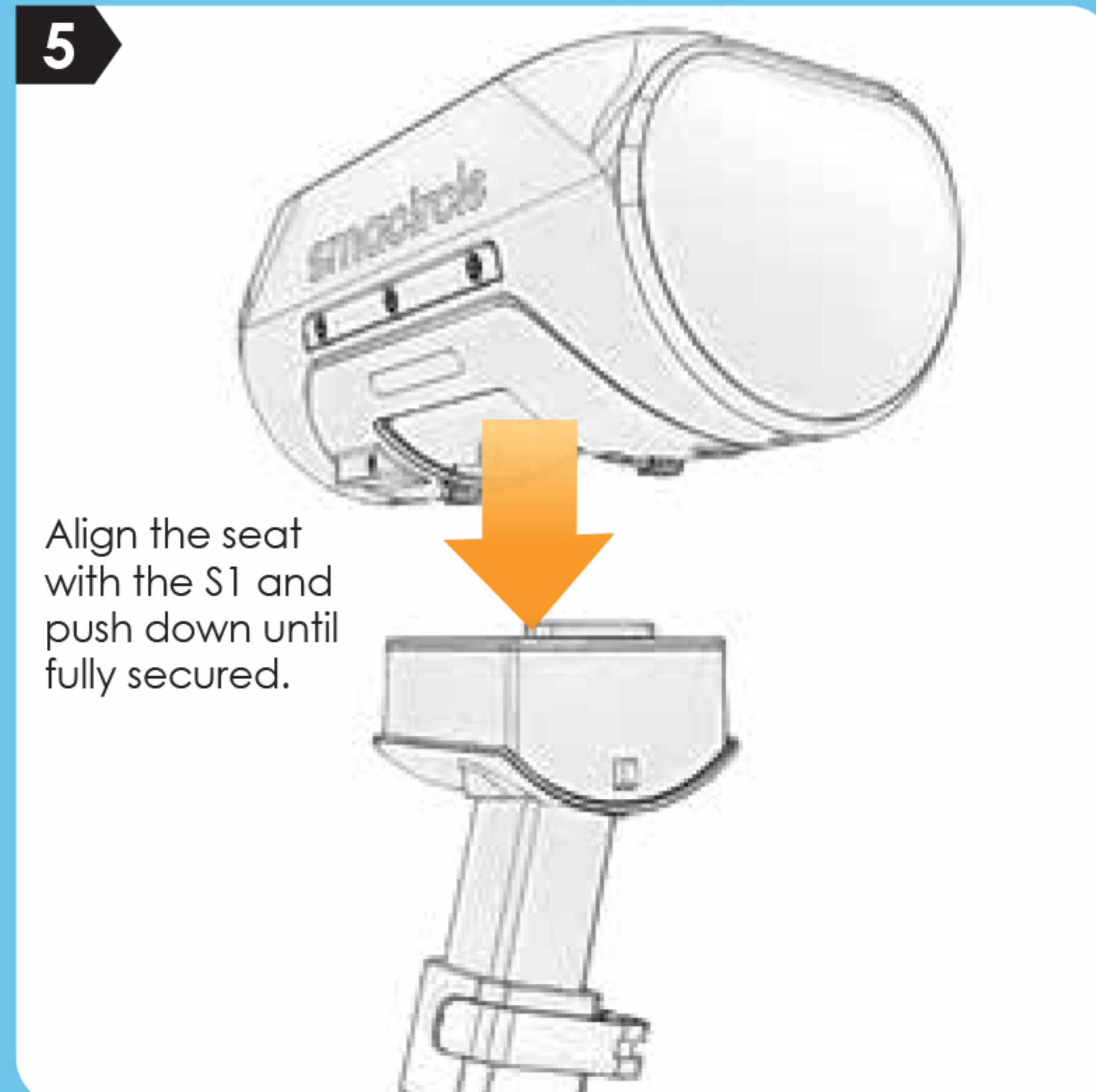
3



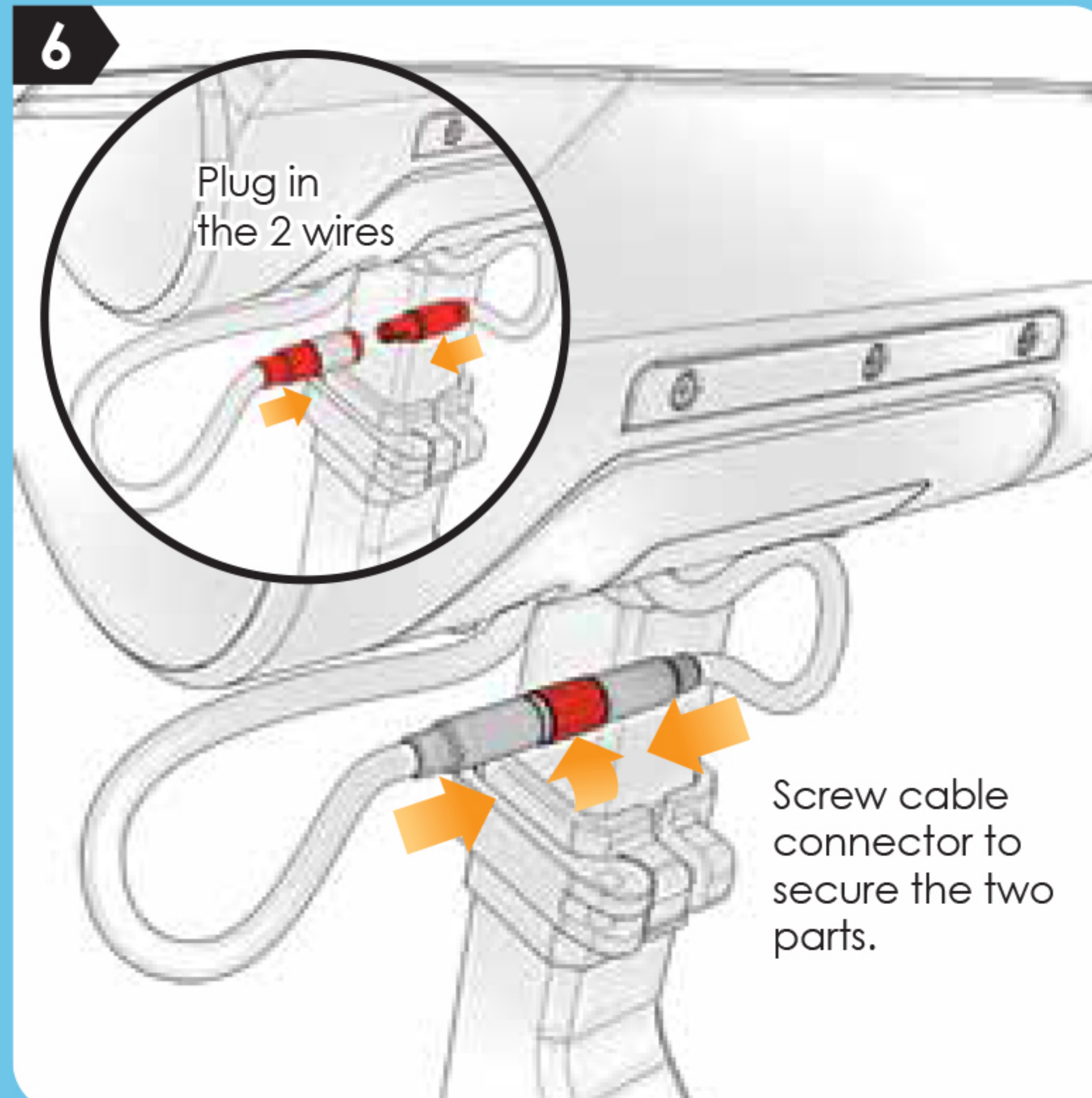
4



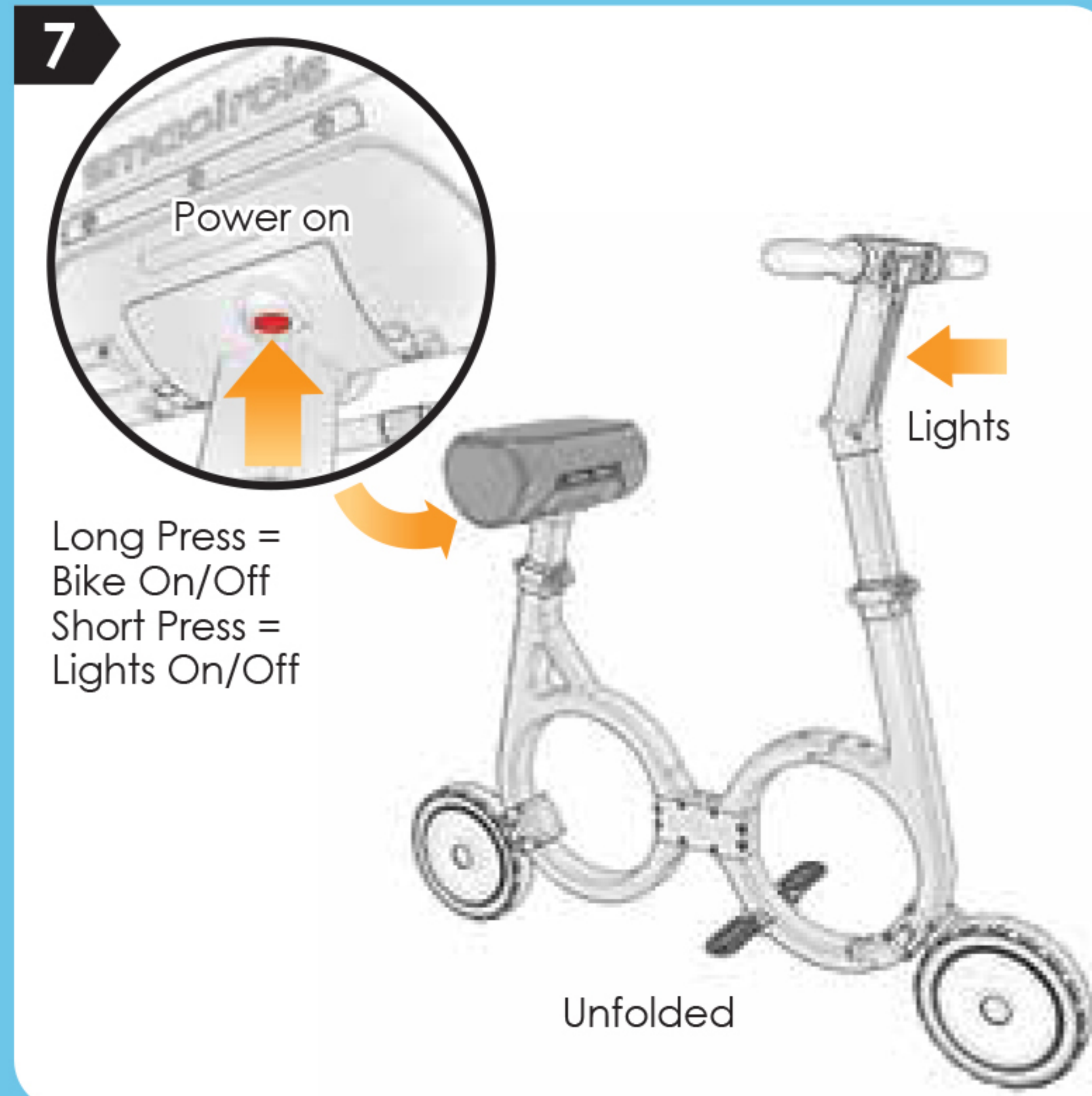
5



6



7



**WARNING:** Please make sure to align the pins and holes on the two plugs to avoid any damage and short-circuiting of the battery. Please make sure to slide the neck upwards before unfold the upper portion of the S1 by 180°.